

APRIL 2009 £4.40

# THE WORLD OF INTERIORS





5 Odd, the maker of 'Odd's Old Rocker', has added a new shape of sofa to its range. Named the 'Kane Kane Old Rocker' after the particularly round breed of pig of that name, the sofa has a 'fat' upholstered back and rounded arms. With a stainless-steel frame and rust-resistant canvas, the swinging seat can be left outside all summer long, and packs away easily for winter storage. For information on Odd's products ring 1931 830074, or visit [oddlimited.com](http://oddlimited.com).

6 Pots & Pithoi has the largest collection of beautiful Cretan terracotta pots anywhere in the world. It also offers water features, garden furniture, ceramics,

glassware, olive oil and foods. Pots & Pithoi The Barn, East St, Turners Hill, West Sussex, RH10 4QQ (01342 716793; [potsandpithoi.com](http://potsandpithoi.com)).

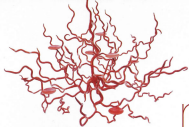
7 Hebden's is a long-established family-run firm producing beautiful, fully detailed, tailor-made conservatories, orangeries and bespoke structures - from the design stage to the finished building. Ring 01243 673313, or visit [hebden.co.uk](http://hebden.co.uk).

8 The Haveringham Collection is the ultimate in stylish, elegant iron furniture that is both luxurious and highly durable - perfect for the home, terrace, conservatory or poolside. Ring 01489 893481, or visit [haveringham.co.uk](http://haveringham.co.uk).



## The Great Outdoors

Offering everything from Edwardian-style seating to garden-design courses, these companies are sure to make you venture outside this springtime



# network



From top: nickel door pull from Chloé Albany; French 1900s 'Coral' metal chandelier; Decorative Antiques & Textiles Fair; conservatory from Vale Garden Houses;



Sophia Salaman chooses the best merchandise and events worldwide

■ The ultimate in style and elegance, Heveningham's iron furniture is perfect for the home, terrace, conservatory or poolside. Custom-made in Britain, all items are zinc-coated and finished with powder coating, which combine to give a luxurious and durable finish. Designs include dining sets, chaise-longues, armchairs, tables, bar stools, benches, Versailles tubs and swing seats. All are available in a variety of sizes. Ring 01489 893481, or visit [heveningham.co.uk](http://heveningham.co.uk).

■ Vale Garden Houses, the Lincolnshire-based company which has designed and made bespoke conservatories for over 25 years, has launched its own conservatory interiors department. The collection of attractive and durable items for decoration within glazed structures includes furniture, lighting, planters and flooring. A full advice service is available, offering guidance on both the technical and design aspects of your project, whatever they may be. Ring 01476 564433, or visit [valegardenhouses.com](http://valegardenhouses.com).



■ Launched in 1985, the Decorative Antiques & Textiles Fair still leads the way in interior design. The special theme for the foyer at this spring's event (21–26 April) is 'Club Room', featuring items associated with a classic gentleman's bolthole: a complete Victorian billiard room, comfortable leather seating, a library area, sporting and gaming memorabilia, drink-related items and associated decorative touches. All items will be offered for sale by exhibitors at the fair. Ring 020 7824 5173, or visit [decorativefair.com](http://decorativefair.com).

■ Originally established in 1831 and relaunched from its Hertfordshire base in early 2007, antique dealer Solomon Bly specialises in the best of early 18th-century English furniture. The collection combines fine proportions, clean lines and rich colours, and furniture is presented in ways to help potential clients visualise pieces in their own homes, as well as allowing an appreciation of detail. Ring 01442 828011, or visit [solomonbly.com](http://solomonbly.com).



■ Ambitious home cooks will love Wolf's sleek new induction hob. State-of-the-art functions include a countdown feature for precision timing and sensory technology that automatically turns off hobs if no pan is detected within 30 seconds. Because heating and temperature adjustments are immediate, cooking can be 50 per cent quicker than with traditional methods: you can melt chocolate at 50 watts of power and boil water in half the normal time. The hob can also be fitted flush to the work surface for an ultra-sleek finish. Ring 020 8418 3800, or visit [westey.co.uk](http://westey.co.uk).

■ Located in the heart of London's famous Portobello Road, Chloé Albany's showroom is a veritable treasure trove of door handles, cabinet fittings, hooks and mirrors. There you'll find Obsidian, a naturally occurring volcanic glass, fossilised wood, mother-of-pearl and a brilliant array of river and sea pebbles. You can also spruce up your front door with the finest English nickel and bronze ware, including pulls, letterboxes and handles for exterior and interior doors. Chloé Albany, 84 Portobello Rd, London W11 (020 7727 0707; [chloéalbany.com](http://chloéalbany.com)).

John Cullen Lighting showroom on the King's Road; decanter from Baccarat's 'lobness' collection; Norseybury table base and chairs from The Heveningham Collection; a George II mahogany centre table at Solomon Bly Antiques



■ Baccarat now has a fresh look thanks to Noël Duchaufour Lawrence and 5.5 Designers, with whose help it has created the new 'lobness' collection. Iconic designs from the Baccarat archives, such as the Marie-Louise vase, have been used for glasses, carafes and other vessels to form a collection that is a cultural mix-and-match of classic icons and pure forms, in which the old complements the new, and vice versa. Baccarat, Hamods, Brompton Rd, London SW1 (020 7823 7876; [baccarat.com](http://baccarat.com)).

■ John Cullen Lighting has just launched a showroom on the King's Road in London. The Chelsea space will showcase the shop's innovative collection of light fittings, including room sets (such as the 'John Cullen House') to demonstrate how good lighting can dramatically change the mood of a room. A unique custom-built lighting pod will be on display, holding 20 different light sources and 16 different types of fittings. John Cullen Lighting, 561–563 King's Rd, London SW6 (020 7371 5400; [johncullenlighting.co.uk](http://johncullenlighting.co.uk)) ■